

When class ends, work begins.



Are your students thinking about life after school? Employment in the community only happens when we set high expectations early on. So talk to your students about career options.

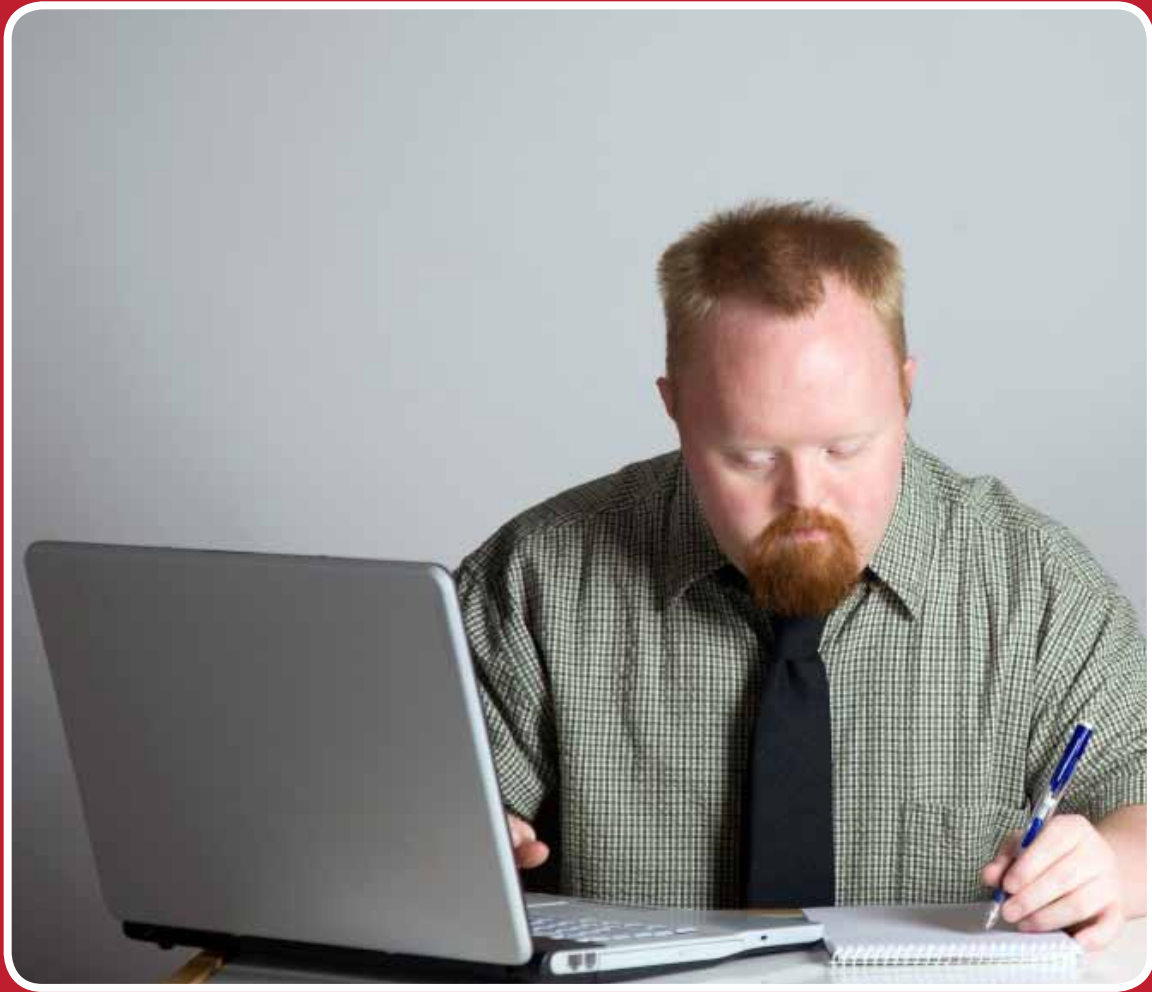
Visit www.workwithoutlimits.org/individuals to learn more.

It's never too early to talk about work.

WorkWithoutLimits
Putting abilities to work in Massachusetts.

Created in partnership with the Massachusetts Down Syndrome Congress

Computer guru since age 10.
Now getting paid for it.



All your students have different aptitudes. Have you talked to them about how those talents can translate into a career? Set high expectations early and the results may amaze you. Visit www.workwithoutlimits.org/individuals to learn more.

It's never too early to talk about work.

WorkWithoutLimits
Putting abilities to work in Massachusetts.

Too young to work?



OK, maybe a little bit. But the road to employment starts in grade school. When you set high expectations early, your students are more likely to find paid jobs in the community after high school. So talk to them about employment—from day one.

Visit www.workwithoutlimits.org/individuals to learn more.

It's never too early to talk about work.

WorkWithoutLimits
Putting abilities to work in Massachusetts.

She always knew she'd work.

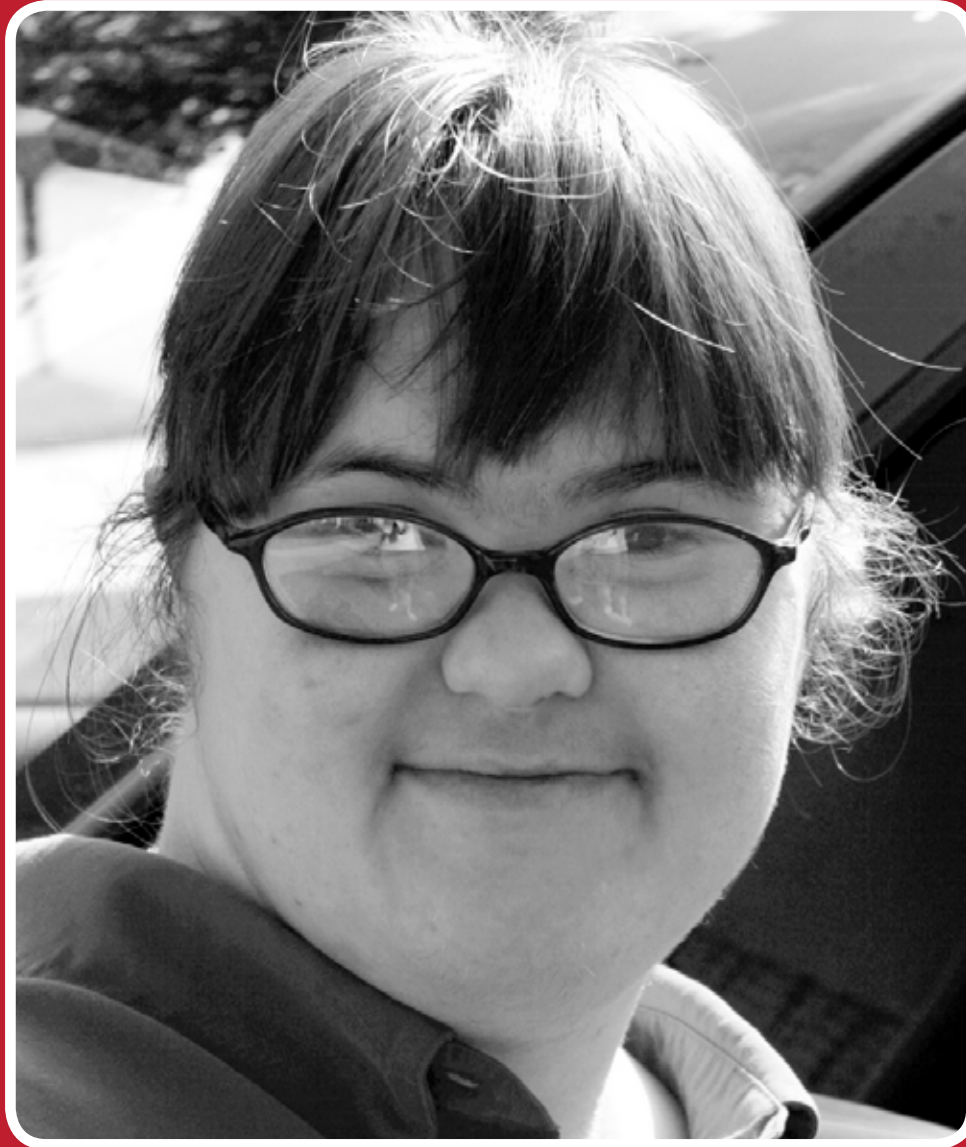


Photo courtesy of Katie Weilbacher

Grade 2: Her teacher asked, "What jobs do you know about?"

Grade 7: Discussed career goals with her parents and teachers.

Today: Works in the community, pays her own rent, friends with coworkers.

Talk with your students about employment. The results may amaze you.

Visit www.workwithoutlimits.org/individuals to learn more.

It's never too early to talk about work.

WorkWithoutLimits
Putting abilities to work in Massachusetts.

Her path to employment started in Grade 6.



You're shaping your students' beliefs about themselves. Are you talking with them about their career options? Students in middle school (and younger) benefit hugely when you set high expectations about employment.

Visit www.workwithoutlimits.org/individuals to learn more.

It's never too early to talk about work.

WorkWithoutLimits
Putting abilities to work in Massachusetts.

School is required. Work is desired.



Photo courtesy of Radio Netherlands Worldwide

Most adults want to work. And the path to employment starts in grade school. Set your students on their way toward fulfilling work in the community. Talk to them about employment.

Visit www.workwithoutlimits.org/individuals to learn more.

It's never too early to talk about work.

WorkWithoutLimits
Putting abilities to work in Massachusetts.